

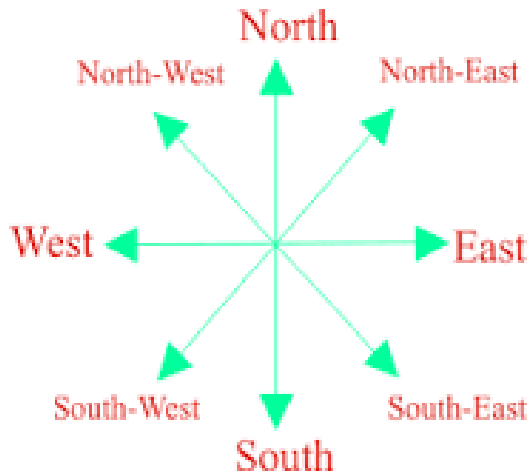
KENDRIYA VIDYALAYA, GANDHIGRAM, DINDIGUL

TITLE: MAPPING YOUR WAY

NOTES

CLASS: V SUBJECT: MATHS MONTH: OCTOBER

DIRECTIONS:



DEFINITION OF A MAP:

A Map is a diagram of a Country or a State or a City showing the location of places in it.

DIFFERENT TYPES OF MAP:

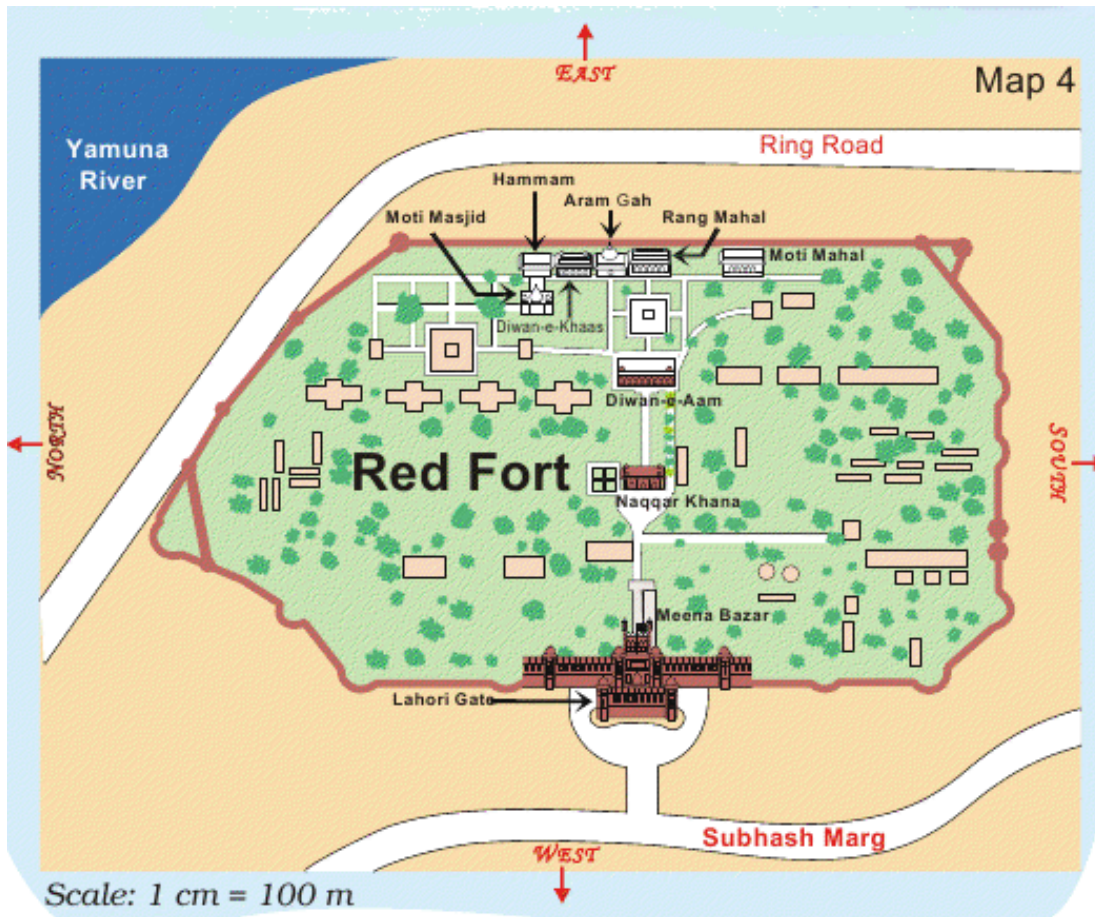
- 1.) World map
- 2.) India map
- 3.) Political map
- 4.) Railway map
- 5.) State map
- 6.) City map
- 7.) Town map
- 8.) River map
- 9.) Road map

ROAD MAP:

Neighborhood 3D Directional Map



A TRIP TO RED FORT:



Find out some places from the map:

- 1.) Which of these is nearest to river Yamuna?
(TheDiwan-e-Aam or the Diwan-e-Khaas)
Ans: The Diwan –e- Khaas is nearest to river Yamuna than Diwan-e Aam.
- 2.) Between which two buildings is AaramGah?
Ans: The Aram Gah lies between the Diwan-e-Khaas and Rang mahal.
- 3.) Which buildings do you pass while going from Rang mahal to the Hammam?
Ans: While going from Rang mahal to Hammam we pass Aram Gah,theDiwan-e-khaas and Moti Masjid.
- 4.) Which building on this map is farthest from Meena Bazar?
Ans: Hammam is farthest from Meena Bazar.
- 5.) About how far is Lahori Gate from Diwan -e-Khaas?
Ans: Lahori Gate is about 600 m from Diwan-e-Khaas.

LOOK AT THE MAP OF INDIA BELOW:



Answer the following questions:

- 1.) The Karnataka team starts from Bangalore and moves in the North direction. Which state does it cross to reach Delhi?
Ans: From Bangalore to Delhi, the team crosses following states: Maharashtra, Madhya Pradesh and Uttar Pradesh. From Madhya Pradesh the team may also go through Haryana or Rajasthan.
- 2.) Jammu and Kashmir is to the North of Delhi so the team from there, travels towards South to reach Delhi. Which states does it cross?
Ans: From Jammu and Kashmir to Delhi the team crosses following states: Himachal Pradesh, Punjab and Haryana.
- 3.) Nonu lives in Gujarat. Nonu's friend lives in West Bengal. Nonu wants to visit his friend. In which direction will he travel?
Ans: Towards East.
- 4.) Is there any state which is to the north of Jammu and Kashmir?
Ans: No.
- 5.) Is there any State which is to the West of Gujarat?
Ans: No.
- 6.) If 1 Cm on the map shows 200 Km on the ground, use this scale to find out:
 - a.) About how far is Delhi from Jaipur?
Ans: 250 Km.
 - b.) Estimate, how far is Jaipur from Bhopal?
Ans: On the map = 2 Cm
On the ground = $2 \times 200 = 400$ Km.
- 7.) Which State is surrounded by four other states?
Ans: Madhya Pradesh
- 8.) Which state has the largest area?
Ans: Rajasthan
- 9.) Which state is about 8 times bigger in area than Sikkim?
Ans: himachal Pradesh
- 10.) About how many times of Punjab is the area of Rajasthan?
Ans: Rajasthan is about 7 times the area of Punjab.
- 11.) Which are the places along the sea coast of South India?
Ans: Chennai, Vishakapatnam, Kanya kumara, Kochi.
- 12.) What colour is used to show the sea?
Ans: Blue colour is used to show the sea on the map.
- 13.) Mark those states which have the sea on one side:

Ans: Gujarat, Maharashtra, Karnataka, Kerala, Tamilnadu and West Bengal.

14.) Name one state which does not have the sea on any side:

Ans: Bihar is one example of states which do not have sea on any one side.

SCALE:

$1 \text{ CM} = 160 \text{ KM}$

i.) 5 cm:

$$1 \text{ cm} = 160 \text{ km}$$

$$\text{Therefore } 5 \text{ cm} = 5 \times 160 = 800 \text{ km}$$

ii.) 12 cm:

$$1 \text{ cm} = 160 \text{ km}$$

$$\text{Therefore } 12 \text{ cm} = 12 \times 160 = 1920 \text{ km}$$

iii.) Distance on the map between Delhi and Chennai is 10.5. What will be the actual distance between Delhi to Chennai?

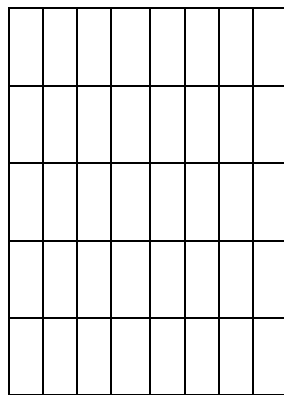
$$\text{Ans: Delhi to Chennai distance} = 10.5 \times 160 = 1680 \text{ kms.}$$

iv.) Distance on the map between Bhopal to Patna is 5.5. What will be the actual distance between Bhopal to Patna?

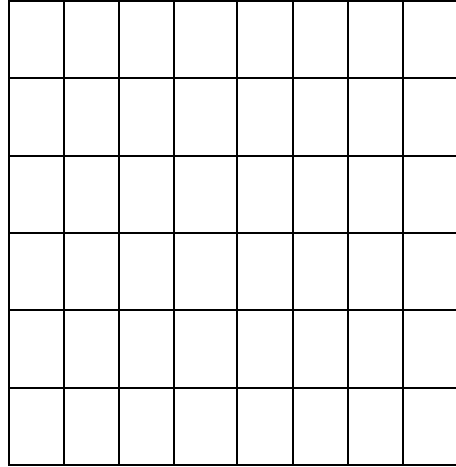
$$\text{Ans: Bhopal to Patna distance} = 5.5 \times 160 = 880 \text{ kms.}$$

MAKE BIG, MAKE SMALL:

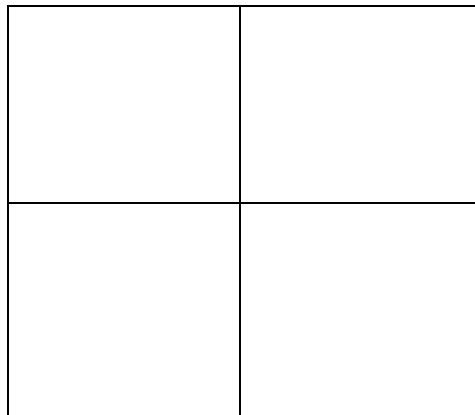
i.) Half cm grid:



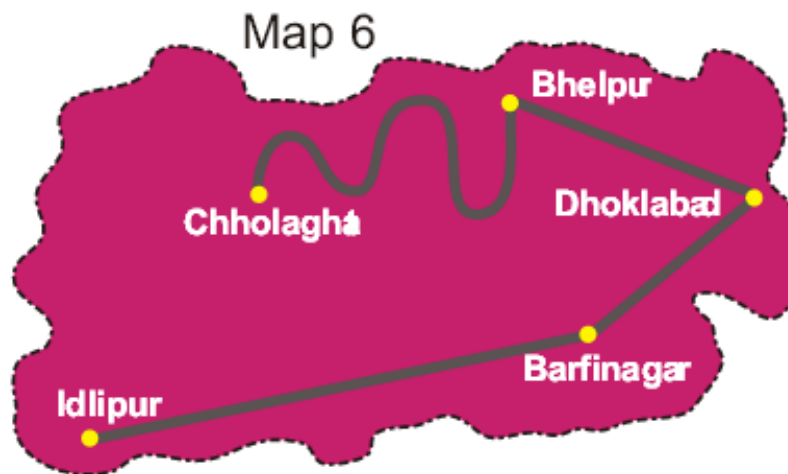
ii.) 1 cm grid:



iii.) 2cm grid:



DISTANCES BETWEEN TOWNS:

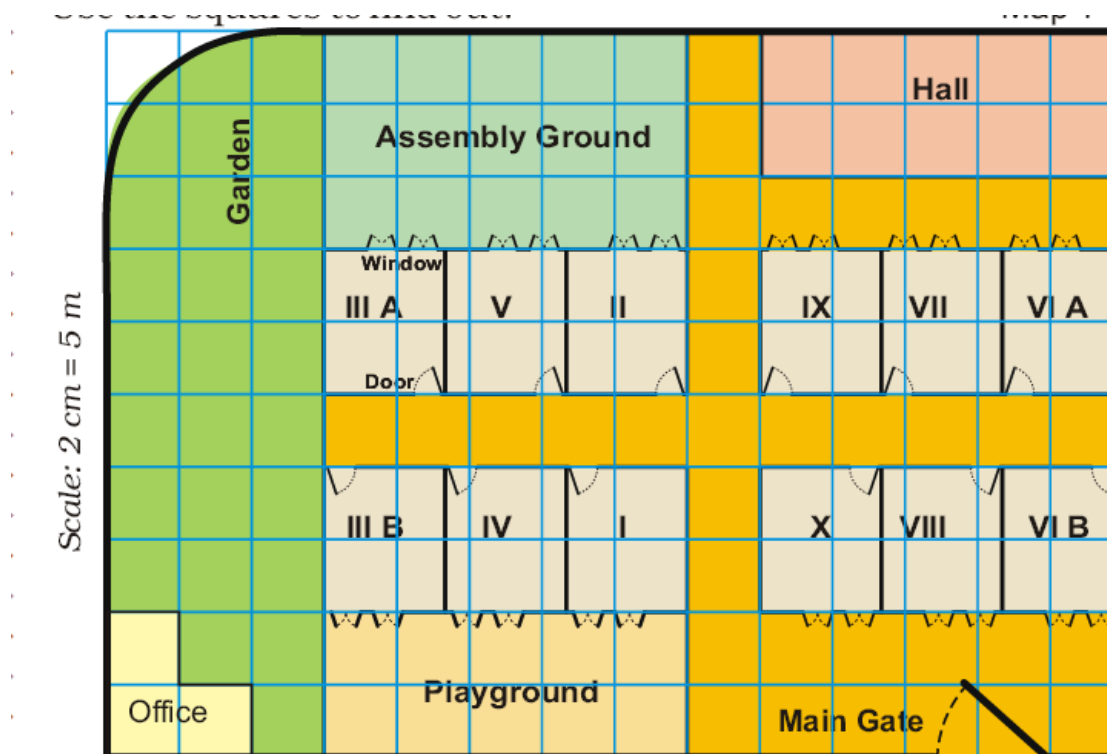


These are five towns . Find out:

- 1.) How many cm away is Idlipur from Barfinagar on the map?
 Ans: Idlipur is 4.7 cm away from Barfinagar, on the map.
- 2.) How many kilometres will you have to travel if you go from Idlipur to Barfinagar?
 Ans: The scale of the map is 1 cm = 10 km
 Hence, 4.7 cm = 10 x 4.7 km = 47 km
 Hence, Idlipur is 47 km away from Barfinagar.
- 3.) There is a place called Thukpagram midway between Idlipur and Barfinagar. Mark it with a "T":
- 4.) A town called Jalebipur is 35 kms away from both Chholaghat and Dhoklabad. Mark "J" for it:
- 5.) Measure the length of the route between Bhelpur and Chholaghat :
 Ans: On the map the distance between Bhelpur and Chholaghat = 5.5 cm
 Hence, distance = 10 x 5.5 km = 55 km.

ASHI'S SCHOOL:

Ashi's school looks like this from the top:



Use the squares to find out:

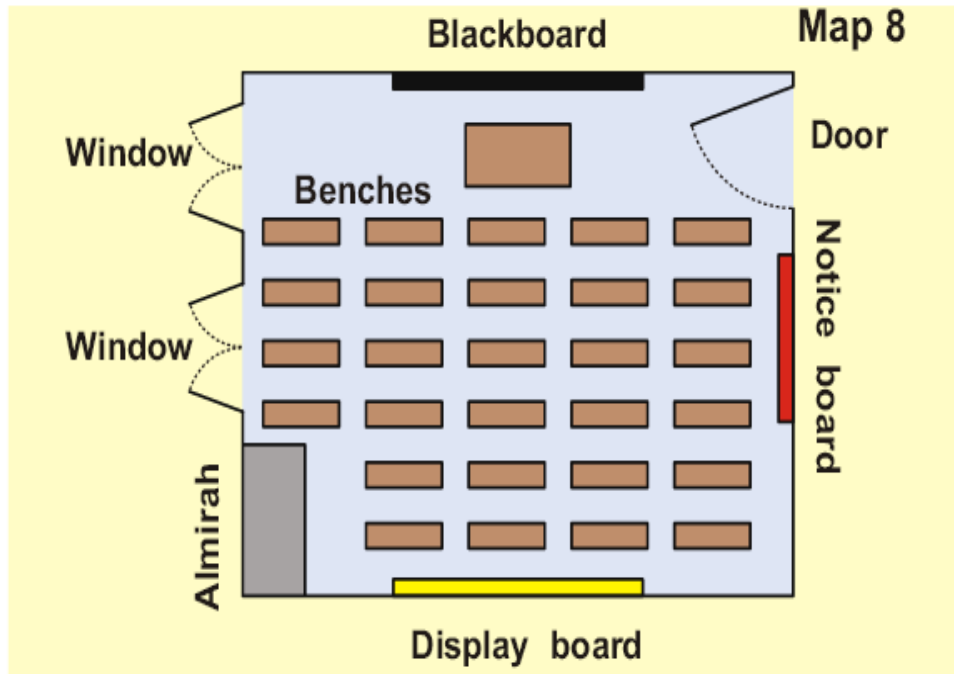
1.) How many times bigger is the area of the assembly ground than that of the office?

Ans: The Area of the assembly ground is 5 times that of the office.

2.) How much is the length and width of each classroom?

Ans: Length 5 M, Width 4 M.

3.) All classroom's in Ashi's school look like this:



Look carefully and answer:

i.) Which of these is exactly opposite to the Blackboard?

Ans: Display board.

ii.) Can a child sitting in III A see the playground?

Ans: No, A child sitting in III A cannot see the playground.